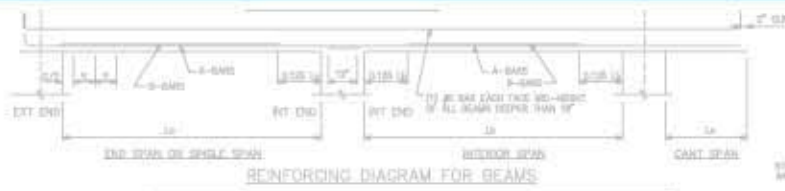


Springhill College Dormitory Viragh I



BEAM SCHEDULE									
NO.	SPAN	TYPE	SECTION	REINFORCING	REINFORCING	REINFORCING	REINFORCING	REINFORCING	REINFORCING
01	12'-0 1/2"	1	1	1	1	1	1	1	1
02	12'-0 1/2"	1	1	1	1	1	1	1	1
03	12'-0 1/2"	1	1	1	1	1	1	1	1
04	12'-0 1/2"	1	1	1	1	1	1	1	1
05	12'-0 1/2"	1	1	1	1	1	1	1	1
06	12'-0 1/2"	1	1	1	1	1	1	1	1
07	12'-0 1/2"	1	1	1	1	1	1	1	1
08	12'-0 1/2"	1	1	1	1	1	1	1	1
09	12'-0 1/2"	1	1	1	1	1	1	1	1
10	12'-0 1/2"	1	1	1	1	1	1	1	1
11	12'-0 1/2"	1	1	1	1	1	1	1	1
12	12'-0 1/2"	1	1	1	1	1	1	1	1
13	12'-0 1/2"	1	1	1	1	1	1	1	1
14	12'-0 1/2"	1	1	1	1	1	1	1	1
15	12'-0 1/2"	1	1	1	1	1	1	1	1
16	12'-0 1/2"	1	1	1	1	1	1	1	1
17	12'-0 1/2"	1	1	1	1	1	1	1	1
18	12'-0 1/2"	1	1	1	1	1	1	1	1
19	12'-0 1/2"	1	1	1	1	1	1	1	1
20	12'-0 1/2"	1	1	1	1	1	1	1	1
21	12'-0 1/2"	1	1	1	1	1	1	1	1
22	12'-0 1/2"	1	1	1	1	1	1	1	1
23	12'-0 1/2"	1	1	1	1	1	1	1	1
24	12'-0 1/2"	1	1	1	1	1	1	1	1
25	12'-0 1/2"	1	1	1	1	1	1	1	1
26	12'-0 1/2"	1	1	1	1	1	1	1	1
27	12'-0 1/2"	1	1	1	1	1	1	1	1
28	12'-0 1/2"	1	1	1	1	1	1	1	1
29	12'-0 1/2"	1	1	1	1	1	1	1	1
30	12'-0 1/2"	1	1	1	1	1	1	1	1

Architect – Goodwin Mills & Cawood, Inc.

Building Size – 66,000 square feet

Structural System:

Superstructure – Cast in place concrete skip joists integrate with a lateral load resisting system consisting of cast in place concrete stairwells and elevator cores.

Substructure – The building is constructed with a partial basement built with concrete walls. The entire structure is supported on shallow foundations.



BARTER & ASSOCIATES, INC.
STRUCTURAL ENGINEERS

Mobile, Alabama
Memphis, Tennessee

•DESIGN •ANALYSIS •INVESTIGATION •COMMERCIAL •INDUSTRIAL •MARINE

